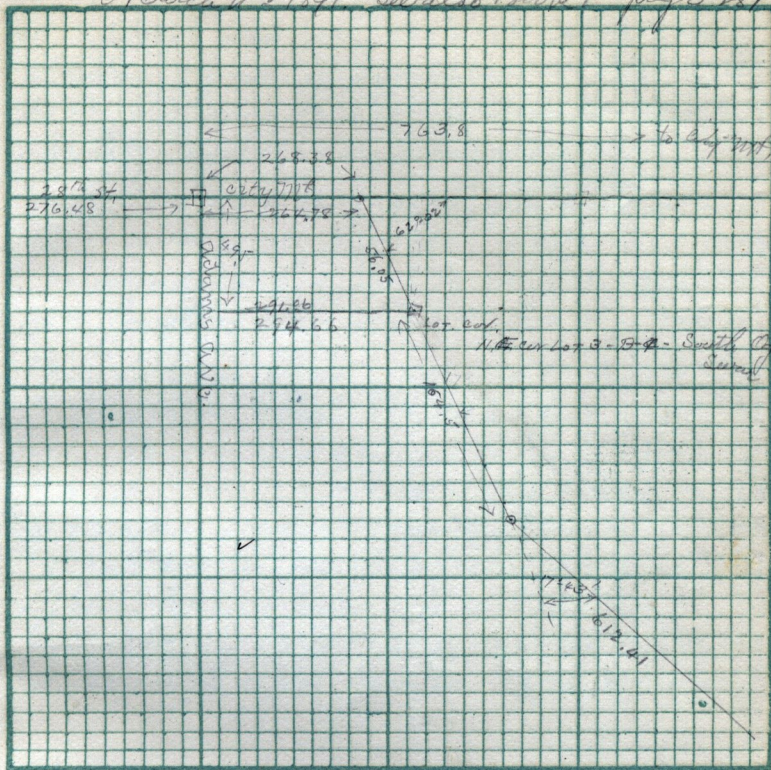


March 27th 1891 - See also Book F Page 287

← 6 cont.
 Vandal av



Scale: Chains per inch.

Copy of deed from Sam^l. F. Berrett to W^m H. Hickenlooper
 Mar. 16-1891. "C" 626. Part of S.W. 1/4 Sec 30 T. 7. N. R. 1. W.
 Beg. 17.²⁵ ch E. of N.W. cor. of said 1/4 Sec. S 11.⁵² ch, N. 5.⁰⁰ ch.
 S 18.³³ ch, E 20.³⁶ ch, N 18.¹⁵ ch, N 5.⁰⁰ ch; N 12.¹⁷ ch, N 10.⁰⁰
 ch to beg. 69.¹⁵ a. Also another piece on N.W. 1/4 of said Sec.
 Beg. 17.²⁵ ch E. of S.W. cor of said 1/4 Sec. N 1-³⁰ E 9.87 ch.
 S 84° E 10. ch S 4 1/2° N 9.80 ch, N 10. ch to beg. 9.85 a.